



Datenblatt - Fiche technique - Data sheet

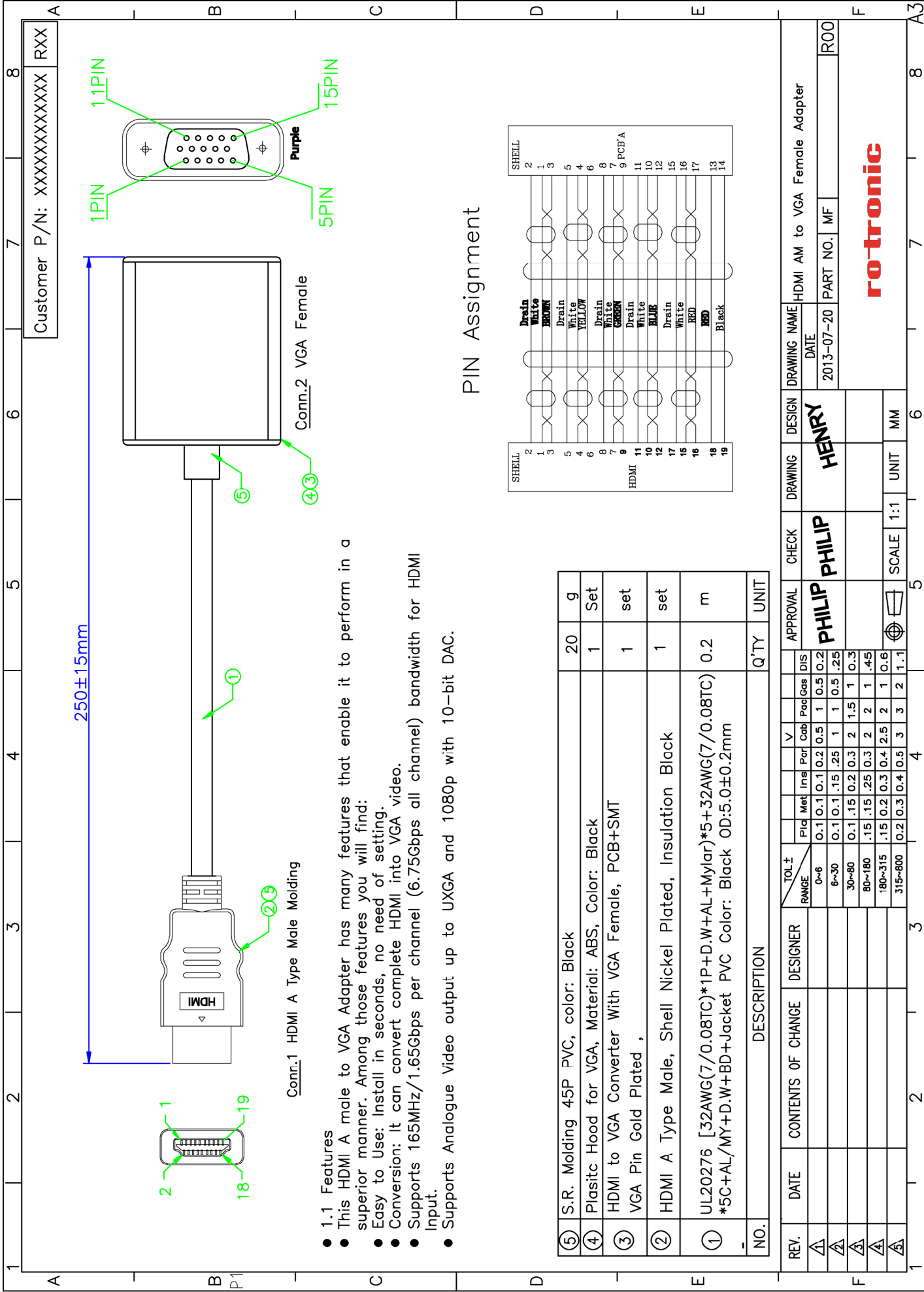
12.99.3114



VALUE HDMI-VGA Adapterkabel, HDMI ST / VGA BU

VALUE Adaptateur HDMI-VGA, HDMI M-VGA F

VALUE Cableadapter, HDMI M - VGA F



Customer P/N: XXXXXXXXXXXXXX RXX

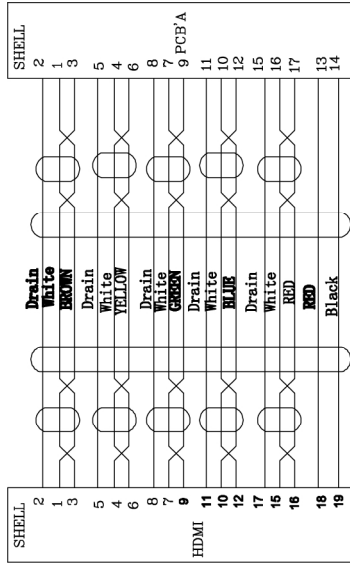
250±15mm

Connr.1 HDMI A Type Male Molding

Conn.2 VGA Female

- 1.1 Features
- This HDMI A male to VGA Adapter has many features that enable it to perform in a superior manner. Among those features you will find:
 - Easy to Use: Install in seconds, no need of setting.
 - Conversion: It can convert complete HDMI into VGA video.
 - Supports 165MHz/1.65Gbps per channel (6.75Gbps all channel) bandwidth for HDMI Input.
 - Supports Analogue Video output up to UXGA and 1080p with 10-bit DAC.

PIN Assignment



NO.	DESCRIPTION	Q'TY	UNIT
⑤	S.R. Molding 45P PVC, color: Black	20	g
④	Plastic Hood for VGA, Material: ABS, Color: Black	1	Set
③	HDMI to VGA Converter With VGA Female, PCB+SMT VGA Pin Gold Plated ,	1	set
②	HDMI A Type Male, Shell Nickel Plated, Insulation Black	1	set
①	UL20276 [32AWG(7/0.08TC)*1P+D.W+AL+Mylar]*5+32AWG(7/0.08TC) *5C+AL/MY+D.W+BD+Jacket PVC Color: Black OD:5.0±0.2mm	0.2	m

REV.	DATE	CONTENTS OF CHANGE	DESIGNER	TOL ± RANGE	Pld	Met	Ins	Per	V	Cob	Pac	Gas	Dis	APPROVAL	CHECK	DRAWING	DESIGN	DRAWING NAME
△				0~6	0.1	0.1	0.1	0.2	0.5	1	0.5	0.2		PHILIP	PHILIP	HENRY		HDMI AM to VGA Female Adapter
△				6~30	0.1	0.1	.15	.25	1	1	0.5	.25						DATE
△				30~80	0.1	.15	0.2	0.3	2	1.5	1	0.3						PART NO.
△				80~180	.15	.15	.25	0.3	2	2	1	.45						MF
△				180~315	.15	0.2	0.3	0.4	2.5	2	1	0.6						ROO
△				315~800	0.2	0.3	0.4	0.5	3	3	2	1.1						
															SCALE	1:1	UNIT	MM
															rotronic			